

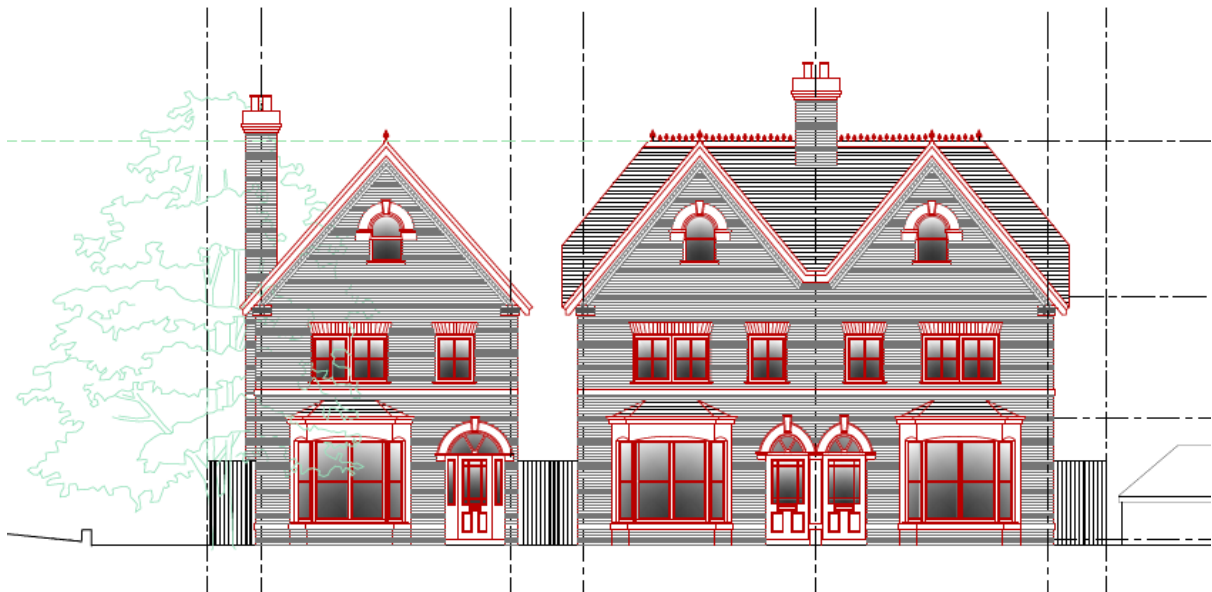


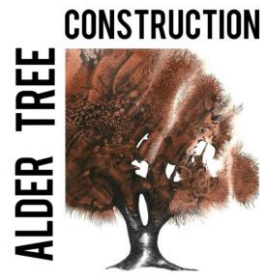
# *Health and Safety Policy*

ALDER TREE CONSTRUCTION LTD

14 Mill Court, 432 Merton Rd, London SW18 5AE

2025





# Policy statement

## Part 1: Statement of intent

This is the health and safety policy statement of:

### **ALDER TREE CONSTRUCTION LIMITED**

Our health and safety policy is to:

- Prevent accidents and cases of work-related ill health
- Manage Health and Safety risks in our workplace
- Provide clear instructions and information, and adequate training, to ensure employees are competent to do their work
- Provide PPE (Personal Protective Equipment)
- Consult with our employees on matters affecting their Health and Safety
- Provide and maintain safe plant and equipment
- Ensure safe handling and use of substances
- Maintain safe and healthy working conditions
- Implement emergency procedures, including evacuation in case of fire or other significant incident
- Review and revise this policy regularly

Company: ALDER TREE CONSTRUCTION LIMITED

Name: Pawel OLSZANSKI

Signed: *Pawel Olszanski*

Date: 9<sup>th</sup> of September 2025

Review date: 9<sup>th</sup> of September 2026



## *Part 2: Responsibilities for health and safety*

1 Overall and final responsibility for health and safety:

**Pawel OLSZANSKI** (*Managing Director*)

2 Day-to-day responsibilities for ensuring this policy is put into practice:

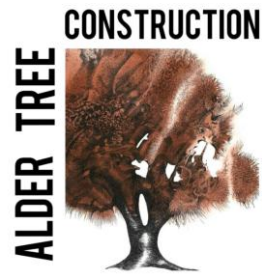
**Pawel OLSZANSKI** (*Managing Director*)

3 To ensure health and safety standards are maintained/improved, the following people have responsibility for in the following areas:

**Pawel OLSZANSKI** (*Managing Director*) – safety, RAMS, consulting employees, accidents, first aid and work-related ill health, monitoring, accident and ill-health investigations, emergency procedures, fire and evacuation, instruction and supervision, training, monitoring equipment

4 All employees should:

- co-operate with supervisors and managers on health and safety matters,
- take reasonable care of their own health and safety and
- report all health and safety concerns to an appropriate person (as detailed above).



## *Part 3: Arrangements for health and safety*

### **Risk assessment**

- We will complete relevant risk assessments and take action.
- We will review risk assessments when working habits or condition change.

### **Training**

- We will give staff and subcontractors Health and Safety induction and provide appropriate training (including Work at Height, Asbestos Awareness and Electrical Safety)
- We will provide PPE (Personal Protective Equipment)
- We will make sure suitable arrangements are in place for employees who work remotely.

### **Consultation**

- We will consult staff routinely on Health and Safety matters as they arise and formally when we review Health and Safety.

### **Evacuation**

- We will make sure escape routes are well signed and kept clear at all times
- Evacuation plans are tested from time to time and updated as required.