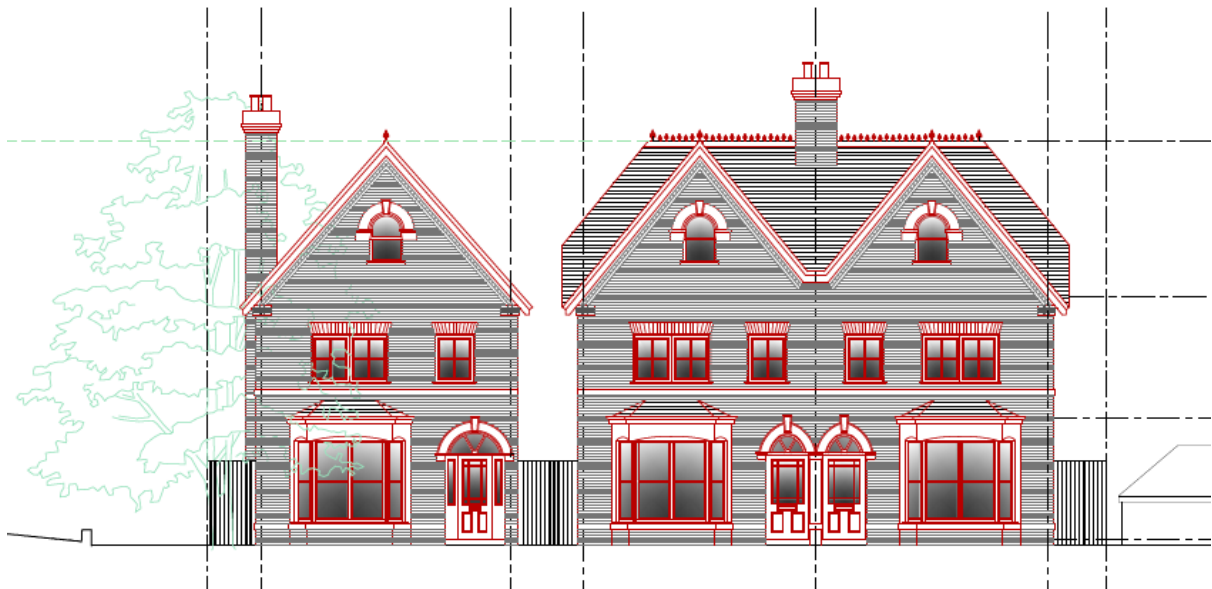




Environmental Management Policy

2025





Introduction and aim

Alder Tree Construction Ltd is a construction business, operating from a site in London and surrounding areas. Our main services are new build and refurbishment. We recognise that our operations result in emissions of air and water, and the generation of waste. It is our aim to comply with legislation and other requirements, continue to reduce the environmental impacts of our business and operate in an environmentally responsible manner. This policy describes how we will achieve our aim.

Responsibility

This environmental policy applies to all our operations including management, office services, site operations, and procurement. Alder Tree Construction Ltd have overall responsibility for ensuring that sufficient resources are made available to enable the business to achieve our environmental objectives and targets and that the policy is implemented.

Alder Tree Construction Ltd have the day-to-day responsibility for ensuring that the requirements of this policy are being followed and for monitoring the effectiveness of the objectives. However, all employees have a responsibility in their area to ensure that the aims and objectives of the policy are met.

Objectives

We aim to:

- make efficient use of natural resources by conserving energy and water, minimising waste and recycling where possible
- meet our duty of care requirements in relation to waste by ensuring the safe keeping, transportation and subsequent recovery or disposal of waste
- use recycled construction materials whenever these can be commercially justified
- keep transport use to a minimum and regularly service vehicles to maintain their efficiency
- work with suppliers to ensure they recognise and reduce the environmental impact of their products and transportation
- include environmental considerations in investment decisions for new plant, equipment or working practices



- inform and train all employees of the companies' environmental objectives and how they can assist in meeting targets
- use the most environmentally friendly cleaning products whenever possible
- Training for new employees and program of refresher training to keep employees/other workforce updated on relevant legal requirements and good environmental management practice.
- Respond to, monitor and record any environmental incidents, emergencies and complaints

Targets

To achieve our aims, we have set ourselves the following targets:

- reduce vehicle emissions to air by the scheduling of work to reduce mileage and servicing all vehicles
- reduce the generation of general and hazardous wastes by limiting the amount of stock held in stores and ensuring all jobs are accurately scoped and priced to ensure material usage is minimised
- recycle as much paper, cardboard, plastic and metal waste generated in the office as possible
- reduce paper usage by increasing the use of e-mail and electronic documentation
- reduce energy consumption by monitoring energy usage and training staff on basic housekeeping

Monitoring and auditing

Progress against these objectives will be monitored through several mediums including

- Annual management review of this environmental policy and any associated environmental procedures and updating them at periodic intervals.
- Regular internal audits of environmental procedures.
- The monitoring of environmental objectives and associated KPI's / targets



- Monthly management meetings.
- The monitoring of our supplier's environmental management arrangements to ensure that environmental performance appropriate for the activity to be undertaken is delivered throughout the whole of our organisations supply chain.

Communication

This environmental policy is available at request. All members of staff will receive training on the environmental responsibilities of their role and will be informed of any updates or revisions via e-mail or team meetings.

Name: Pawel OLSZANSKI

Signed: *Pawel Olszanski*

Date: 2nd of February 2025

Position: Managing Director